

Kyoto City Museum of Art 90th Anniversary Exhibition

## Takeuchi Seiho: A Destructive and Creative Force

October 7 (Sat.)– December 3 (Sun.), 2023

To commemorate its 90<sup>th</sup> anniversary, the Kyoto City KYOCERA Museum of Art will hold the special exhibition, “Takeuchi Seiho: A Destructive and Creative Force.”

Takeuchi Seiho was the most influential painter in modern Japanese painting. During the Meiji period, Seiho aimed for the innovation in the world of painting and traveled to the West, seeking for new expressions of Japanese painting which transcends old traditions. In the Taisho and Showa periods, when his skills have reached maturity, Seiho was known to train many of his pupils while playing an active part in the frontlines of art as an influential figure. While emphasizing on the importance of “sketching,” Seiho produced vivid works by his outstanding brushworks and created the foundation of modern Japanese painting in Kyoto by his overwhelming force of leadership. Nowadays, Seiho is widely known as a masterly painter, however, in his road to success, vast amounts of energy were needed in order to create a new horizon by destroying old norms.

In this exhibition, starting with our collection of *Posing for the First Time*, Seiho’s representative works from his early years to his late stages will be recollected. To shed light into the challenges Seiho had faced, his sketches, preparatory drawings, reproductions of old paintings and various references will be on display. This large-scale, retrospective exhibition will fully look back at roughly 130 works of Seiho and his strenuous efforts.

October 7 (Sat.)– December 3 (Sun.), 2023

\*There will be changes in the exhibition

Part 1 October 7 (Sat.)–November 5 (Sun.)

Part 2 November 7 (Tue.)– December 3 (Sun.)

Venue: Kyoto City KYOCERA Museum of Art, Main Building South Wing 1F

Opening Hours: 10:00-18:00 (Last admission: 17:30)

Museum closed on Mondays, except public holidays.

### Admission

Adult ¥1,800 (Advance/Group ¥1,600)

University/High school student ¥1,300 (Advance/Group ¥1,100)

Junior high and younger students are admitted free of charge.



*Maiko Dancing "Yamanba", 1909*  
Collection of Takashimaya Archives  
Part 1 Exhibit

Organizers: City of Kyoto, The Kyoto Shimbun, LIVE EXSAM Inc., BS FUJI INC., Nikkei Inc.

Tickets are available at:

The museum official online ticket, Ticket pia (P code: 686-583), LAWSON TICKET (Lcode: 54609), SEVEN TICKET (SEVEN code: 102-038) among others.

Highlights of this Exhibition:

**1. A large-scale retrospective exhibition showcasing the life of Takeuchi Seiho, the absolute master of Kyoto Japanese-style painting.**

From the Meiji to the Showa era, Seiho remained at the center of the Kyoto art scene, and his works, cherished by many as a prominent artist, will be showcased together. The exhibition follows the chronological order of his artistic journey, from the early period when Seiho was recognized for his talent and emerged as a young artist, to the mid period when he sought innovative approaches to Japanese-style painting while questioning the meaning of tradition, to the later period where he faced nature and expressed vitality with an unrivaled brush technique. The exhibition traces the development of Seiho's techniques, the transition of expressions, and the challenges he faced. For the first time in 10 years, a large-scale solo exhibition of Seiho's works is being held in Kyoto (the previous one was held at Kyoto City Museum of Art in 2013).

**2. Newly discovered work on view for the first time!**

A newly discovered work, *Remains of Rome* (1903), will be exhibited for the first time in Japan! This valuable work is said to depict ruins in Italy, Rome and reflects Seiho's experiences in Europe.

**3. A rich display of valuable sketches and preparatory drawings.**

The Kyoto City KYOCERA Museum of Art holds a large collection of sketches, drafts, and other valuable materials. The secret behind Seiho's emphasis on "sketching" lies here. The exhibition will unravel Seiho's gaze on the world, his way of thinking, and his



*Remains of Rome*, 1903  
Full Period Exhibit

attitude toward his work. The preparatory drawings also show the vivid lines that could only be achieved by its process, and reflects Seiho's true nature as an artist who excelled at animal paintings.

#### 4. A Spotlight on Seiho's youth.

This exhibition also focuses on Seiho's works from his youth, which have not received much attention until now. It delves into the struggles he felt and his unwavering dedication to new forms of expression, as well as the criticisms he faced during his early years. Viewers can retrace the dramatic journey of Seiho's life until he became the esteemed master known to us today as the "Great Master Seiho."

Takeuchi Seiho (1864-1942)

Born in Kyoto, his real name was Takeuchi Tsunekichi. He studied under Kono Bairei and was regarded as one of Kono's four best painting students. Takeuchi traveled to Europe to see the 1900 International Exposition in Paris. He was active from the start of Ministry of Education Art Exhibitions and worked as one of the Imperial Household Artists, visiting China twice. He led the modernization of Kyoto's painting circles by fusing factions, including Western paintings. He also broke new ground with his unique perspectives of nature based on sketching and the vividness of his minimal brushwork. He trained a number of talented



artists at the Kyoto City School of Painting and at his own studio, named Chikujokai (Bamboo Stick Fellowship). He was the first recipient of the Order of Cultural Merit.

#### Major exhibit works

#### Full Period Exhibit



*Summer Deer*, 1936, Collection of MOA Museum of Art



*Serenity*, c.1935,  
Collection of Kyoto City Museum of Art



*Cock Fight*, 1926

### Part 1 Exhibit



*Elephants*, c. 1904 \*Oct. 7-Nov.19 only Exhibit



*Moon Over Venice*, 1904  
Collection of Takashimaya Archives

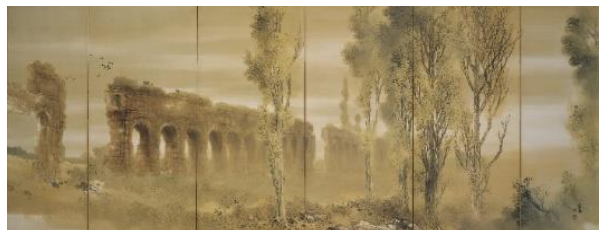


*Long Spring Day at the Beach*, 1922  
Collection of Kyoto City Museum of Art



*Golden Lion*, c.1901  
Collection of VOLKS INC.  
\*Oct. 7-Nov. 12 only Exhibit

### Part 2 Exhibit



*Historic Spot of Rome*, 1903, Collection of Umi-Mori Art Museum \*Nov. 21-Dec. 3 only Exhibit



*Tiger and Lion*, 1901, Collection of Mie Prefectural Art Museum

## Exhibition Catalogue

This exhibition catalogue features full-color photographs of the exhibited works, providing a definitive guide to Seiho's life and masterpieces. Alongside in-depth research papers, it includes columns that offer easily understandable explanations of Seiho's artistic career, making it accessible even to those new to the appreciation of Japanese-style painting. With powerful, realistic, and occasionally charming depictions, this catalogue captures the enchanting allure of Seiho's artworks in all their grandeur.

Authors: Hirano Shigemitsu (Art Historian, Former Chief Curator of Kyoto City Museum of Art), Hirota Takashi (Professor Emeritus, Kyoto Women's University), Mori Mitsuhiro (Curator, Kyoto City KYOCERA Museum of Art), Goto Yumiko (Curator, same institution)

Editor: Curatorial Division, Kyoto City KYOCERA Museum of Art (Kyoto City Museum of Art)

Number of Pages: 224 pages (planned)

Size: B5 Variant | Language: Japanese / English (partially) | Price: TBD

Release Date: Saturday, October 7<sup>th</sup>, 2023 (planned)

Published by: Seigensha Art Publishing, Inc.



*Cherry Blossom Viewing*, 1897

Collection of Umi-Mori Art Museum / Part 2 Exhibit



*Posing for the First Time*, 1913, important cultural property / Collection of Kyoto City Museum of Art / Part 2 Exhibit

## Audio Guide

Saga Tatsuhiko from the highly acclaimed vocal group LE VELVETS, and Ishii Takuma, the renowned classical Youtuber and pianist, will serve as your navigators for this exhibition.

Rental Price: 600 yen (tax included)

Audio Language: Japanese



Saga Tatsuhiko



Ishii Takuma ©Andrej Grlic

-----

[Publicity Image Request Form]

Please fill in the necessary information through the following link:

<https://forms.gle/sHqgtXZ56Rf4tWoS9>

and submit your request for publicity images. We will issue an immediate download link upon completion.

[Press Contact for the Exhibition]

Kyoto City KYOCERA Museum of Art – Public Relations: Katsuya, Kawaguchi, Hirano

Email: [pr@kyoto-museum.jp](mailto:pr@kyoto-museum.jp) | Phone: 075-275-4271

When mentioning our museum, please use the full name “Kyoto City KYOCERA Museum of Art” without abbreviation.